



SKIPLOADER MB14



KEY POINTS

- > **SEPARATELY AND SIMULTANEOUSLY CONTROLLED** telescopic units
- > **INTEGRATED STABILIZERS AND REAR UNDERRUN PROTECTION**
- > **ANTI-CORROSION TREATMENT:** shot blasting of fabricated components
- > **FRONT PLANKING WITH ADAPTABLE TRAYS**
- > **SIDE AND FRONT CONTAINER CHOCKING**
- > **APPROVED LIFTING CHAINS** and swivels with safety latch



OPTIONS



Available controls:
radio control



Skiploader on
cradle



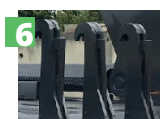
Roller stands or
pivoting runners



High speed



Side hydraulic
lock



Rear spreader
with 1, 2 or 3
hooks



Rear chains for
better tilting



Attachments
brackets suited
for various truck
models

TECHNICAL DATA

		FIXED	TELESCOPIC	FIXED WITH CROSSBAR	TELESCOPIC WITH CROSSBAR
		MB 14F	MB 14T	MB 14 FES	MB 14 TES
Lifting capacity: Container placed on ground					
	2.880 mm	14 000 kg	14 000 kg	14 000 kg	14 000 kg
Depending on loading radius	3.100 mm	12 700 kg		12 700 kg	
	3.300 mm	11 700 kg		11 700 kg	
	4.330 mm		10 000 kg		10 000 kg
Weight		3 000 kg	3 250 kg	3 050 kg	3 340 kg
Container length: (Adjustable centering)		1 610 / 1 850 mm			

Subject to technical modification; data not binding